

Release Notes

for

Investigator Version 3.0.0.xx

BLACKBOX

Power Quality Analysis
at your fingertips

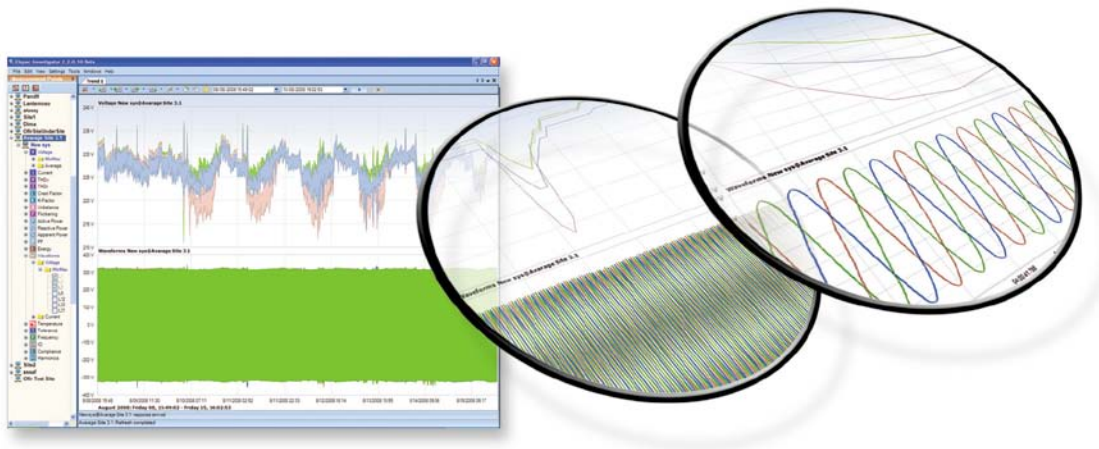




Table of Contents

IMPORTANT NOTIFICATIONS.....	3
SYSTEM REQUIREMENTS	3
NEW FEATURES.....	3
KNOWN ISSUES.....	4
DOWNLOADING	4
UPGRADING THE INVESTIGATOR SOFTWARE	4
TROUBLESHOOTING.....	6

Important Notifications



Please DO NOT UPGRADE to PQSCADA version 3.3.0.xx unless you also upgrade the INVESTIGATOR to version 3.0.0.xx!!! INVESTIGATOR 3.0.0.xx also supports previous versions of PQSCADA.

System requirements

- .NET 3.5 SP1 or higher
- Windows installer (for XP with SP2 or SP1)

New Features

- **Generate Reports** – With this **new feature**, you may now select a report type, define its time period, and customize the report according to a given set of parameters. The report types available are:
 - **NRS Power Quality Report** (South-African Standard) with output options of HTML or PDF.
 - **Chinese based Power Quality Standard Report** (EXCEL)
 - **Parameter Trend Report** per event
 - **Compliance Report** – Power Quality compliance report based on the G4K compliance configuration
 - **PQZIP Enhancements** - User must change Record type in PQZIP Recording to PQSCADA 3.3:
 - **Entire IO module ports recording** While in previous versions, only Digital inputs were recorded in PQZIP, now also Digital output Relays Analog Input and Outputs are recorded; VDC in PQZIP (G4500) is also supported.
 - **User parameters** The user can add his own parameters to PQZIP (up to 32 different parameters). Usage: The user write values via MODBUS registers and these registers are being continuously recorded as part of PQZIP and viewable in the PQS/INV in paralleled to the power parameters for easier investigation
- ❖ The PQZIP Enhancements depends on upgrading the firmware to ver. 4 that will be release within few weeks.

Known issues

- The averaging intervals' observation window length for the compliance reports are based on the EN-50160 standard regardless of the setting in the device.
- In case of no data on a selected parameter, then the resulting graph for that exclusive parameter will not display
- The cycle mark in the time axis in the CBEMA view is correct for 50Hz only.
- In the EN50160 compliance report, the RTF file format doesn't display some of the headers; it is recommended to use the PDF, XLS, or HTML formats.

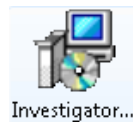
Downloading

- Link at <http://www.elspec.biz/Investigator/PQS.Investigator.Setup.v3.0.0.xx.msi>

Upgrading the Investigator Software

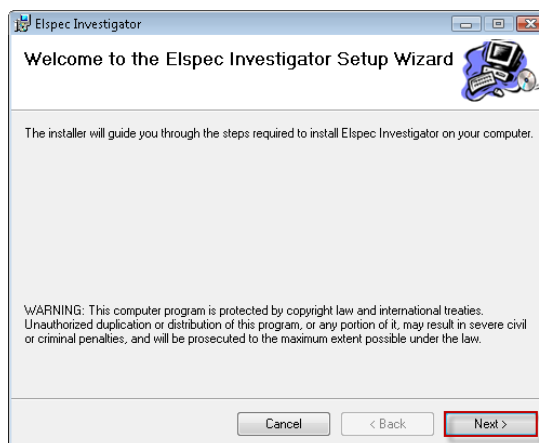
The New version of Investigator automatically uninstalls any previous version of the software.

To Upgrade the Investigator Software:




1. From the location on your PC containing the Setup file, click **Investigator.Setup.v3.0.0.xx.**

The Welcome screen appears

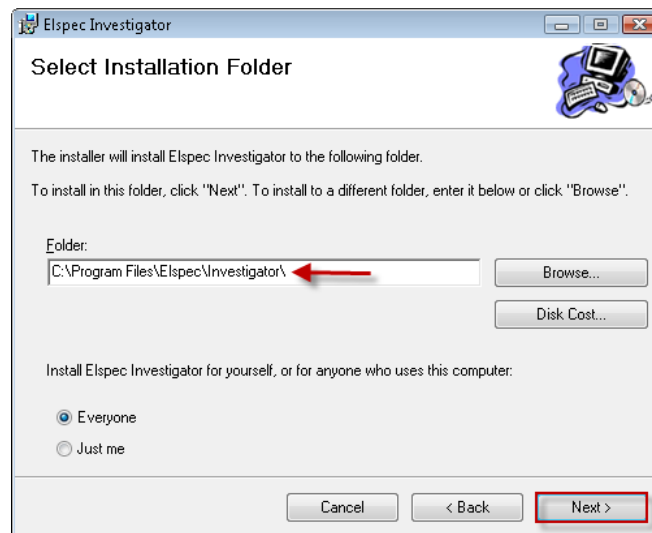



2. Click 

The License Agreement window appears.

3. Select **I Agree**, and then click 

The Select Installation Folder screen appears




4. Make desired selections, then click 

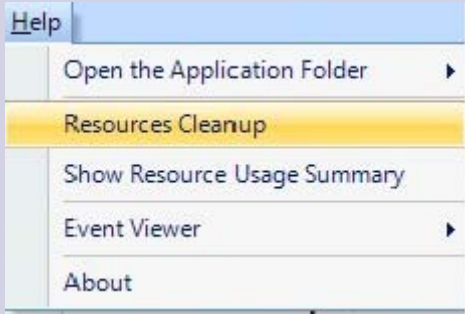
The confirmation screen appears.

5. Click Next to confirm the installation.

The PQSCDADA Installation commences. When complete, the Installation Complete window appears.

6. Click  to complete the installation.

Troubleshooting

Component	Issue	Reason	Solution
Display	The Play and stop button disappeared	The parameter window is too big	Resize the parameter window
Performance	Function of the investigator working slowly than usual	The memory is full	Clean up Investigator Resources 
Events	Don't see the entire events	The investigator can receive up to 20,000 events from one	In case you have 20,000 events on the list, re-inquire the event list from PQSCADA
Report	The report is empty	Old FW version can disable the compliance function	In case your firmware version is older than 4.XX, enable the compliance function
Icon	Previous version icon remains on the desktop	The previous version was never uninstalled.	Delete the icon from the previous version.
Report	Cannot produce a report	Report folder wasn't created during the installation	<ul style="list-style-type: none"> For 64-bit (x64), create this folder: C:\Windows\SysWOW64\config\systemprofile\Desktop For 32-bit (x86), create this folder: C:\Windows\System32\config\systemprofile\Desktop